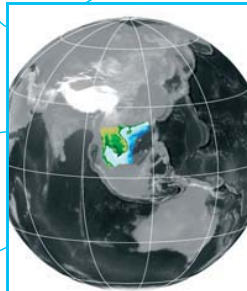


STUDIES



*petroleum
systems
studies in*
indochina



- GRAVITY AND MAGNETIC DATA INTERPRETATION
- STRUCTURES AND PLATE TECTONIC MODELLING
- PETROLEUM GEOCHEMISTRY
- DRAINAGE ANALYSIS AND PALAEO DRAINAGE
- PALAEOGEOGRAPHIC RECONSTRUCTIONS
- PETROLEUM SYSTEMS



GETECH

summary and rationale

GETECH has performed a number of studies which examine the petroleum systems of the Thailand and the Gulf of Thailand Basins, Onshore Thailand, Offshore East Vietnam, Southern Indochina and Offshore Southeastern China. The studies build on GETECH's unique global gravity and magnetic data to underpin a re-evaluation of the structural development of the Indochinese Peninsula and implications for the tectonic development of the region. This forms the basis for the mapping of seven critical palaeogeographic and palaeolandscape timeslice reconstructions. Aided by an analysis of the modern day drainage, the studies then review the landscape evolution and likely effects on sediment dispersal. They also contain a review of the geochemical literature and new geochemical modelling. All these have been utilised to generate new insights into the petroleum systems of the Indochina region.

study areas



Thailand and the Gulf of Thailand Basins

COMPLETE Q1 07

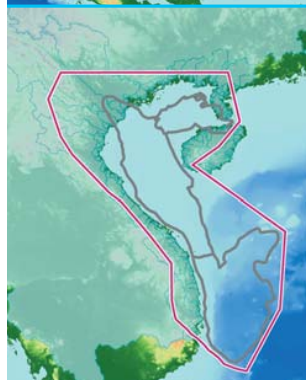
The study concentrates on six key issues: the effect of the structural framework on the prospectivity of the area; the effect of palaeolandscapes on drainage and palaeoclimate; source rock facies variation and maturity; the distribution of reservoirs and the main controls on quality; and the main risks and rewards for oil and gas exploration in the region.



Onshore Thailand

COMPLETE Q2 08

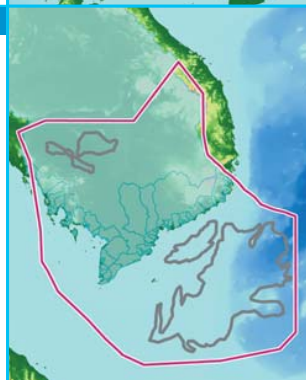
This study is a subset of the larger Thailand and Gulf of Thailand Basins Study. It is designed to make our work accessible to companies that have recently gained onshore exploration acreage in the 2007 Thai 20th Concession Bidding Round.



Offshore East Vietnam

COMPLETE Q1 07

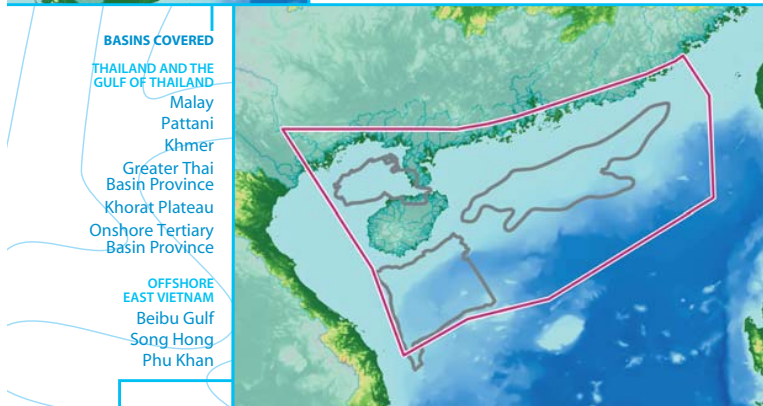
The study examines the kinematics of the South China Sea opening (including a new model for the development of the Song Hong Basin); the effect of landscape evolution on the Red River and the Mekong; source and reservoir distribution and variety; and the main risks for hydrocarbon exploration in the above basins including some data from the Qiongdongnan Basin as an analogue to CO₂ development in the study area.



Southern Indochina

COMPLETE Q1 08

The study examines the effects of the opening of the South China Sea and the rotation of Indochina on the structural framework of the region; the main drainage features which have had influence on the offshore basins; the main source and reservoir horizons for the offshore basins; overall risks and potential of the hydrocarbon basins studied.



Offshore Southeastern China

COMPLETE Q4 08

Our latest study revisits the Beibu Gulf and then extends our coverage along the margins of south-eastern China with comments on development of the deeper offshore basins and the wider structural development of the region.

BASINS COVERED
 THAILAND AND THE GULF OF THAILAND
 Malay
 Pattani
 Khmer
 Greater Thai Basin Province
 Khorat Plateau
 Onshore Tertiary Basin Province

OFFSHORE EAST VIETNAM
 Beibu Gulf
 Song Hong
 Phu Khan

BASINS COVERED

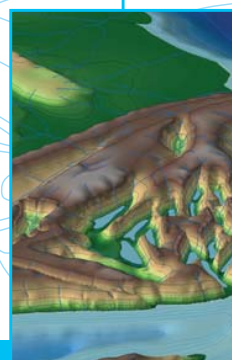
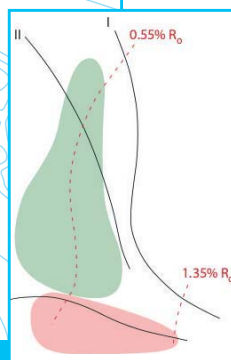
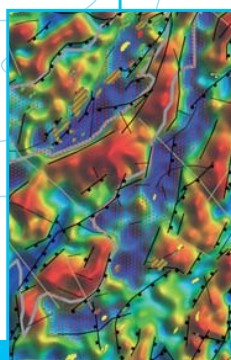
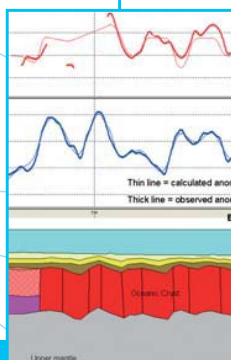
ONSHORE THAILAND
 Khorat Plateau
 Onshore Tertiary Basin Province

SOUTHERN INDOCHINA
 Cuu Long
 Nam Con Song
 Tonle Sap

OFFSHORE SOUTHEASTERN CHINA
 Beibu Gulf
 Pearl River Mouth
 Qiongdongnan

KEY

- Area of study focus
- Drainage basins
- Sedimentary basins



deliverables

The studies are delivered as:

Multivolume reports with accompanying A0 enclosures (hardcopy and pdf)
GIS projects (ArcGIS 9x)

the reports

The reports for these studies generally contain the following:

Executive Summary and Introduction

Structure and Tectonics

Re-evaluation and testing of published structures
 Plate Modelling

Geophysics Interpretation

Images of the gravity and magnetic data including derivatives and transforms to illustrate key features
 Structural interpretation of the gravity and magnetic data
 2D gravity and magnetic profiles

Palaeoenvironmental Mapping

Seven palaeogeographic reconstructions (maps of rotated data locating palaeoenvironments, tectonophysiographic terrains and lithologies)
 Palaeoelevation interpretation and derived palaeo-digital elevation models
 Palaeodrainage reconstruction (including drainage basin geometry and evolution through time)

Drainage and Landscape Analysis

Petroleum Systems Identification and Evaluation

Petroleum Geochemistry

Source rock characterisation and evaluation
 Burial history modelling
 Correlation of available source rock and oil data

Conclusion, References and Appendices

A0 Enclosures

the GIS project

A series of .mxds illustrating:

Potential Field Data and Derivatives

Gravity and magnetic data and derivatives

Structural Framework

Structures, tectonic framework and magmatic bodies.

Palaeogeographies

A series of maps:

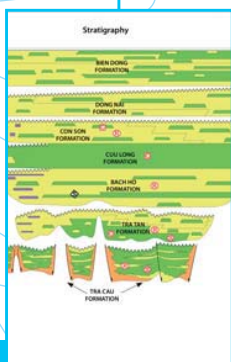
- Palaeoenvironments and tectonophysiographic terranes
- Palaeotopography
- PalaeoDEM (digital elevation model)
- Palaeodrainage

For each of seven timeslices:

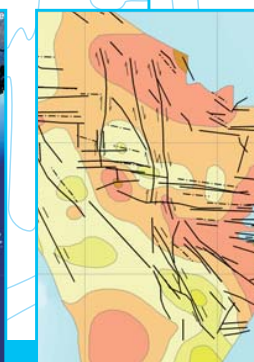
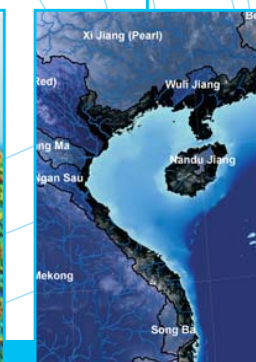
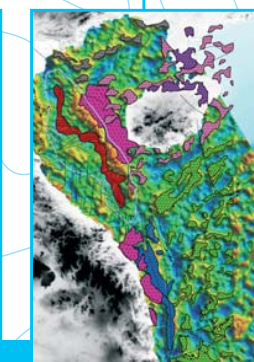
- Wordian
- Norian
- Hauterivian
- Late Palaeocene
- Middle Eocene
- Late Oligocene
- Middle Miocene

Wells, Fields and Blocks

These non-exclusive studies are licensed to companies under GETECH's standard Licence Agreement.



Structure	Scale	Block	Reservoir	Trap	Seal	Caprock	Structural	Magmatic	Other



other products

structure and tectonics of southeast asia

Beginning in Southeast Asia, GETECH is performing what will be an ongoing series of studies to re-evaluate the fundamental structural interpretations and tectonic models that underpin worldwide hydrocarbon exploration. Our aim is to 'return-to-basics' to re-establish the underlying principles of exploration geology utilising GETECH's gravity and magnetic datasets and depth of expertise.

gravity and magnetic data

The underlying digital grids of gravity and magnetic data which have been utilised in our studies are also available separately or as a complementary dataset to the study.



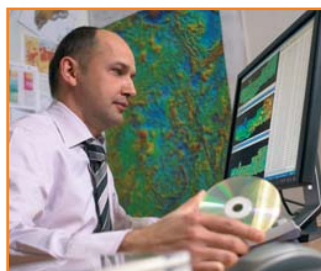
Multi-disciplinary teams of technical experts



Including the world's largest gravity and magnetic library



A global portfolio of focussed exploration reports



further information

For further details please contact GETECH:

UK Office	US Office	Email	Web
+44 113 322 2200	+1 713 979 9900	info@getech.com	www.getech.com



GETECH

