

PROGRAMMES

global palaeogeography programme

UNDERSTAND THE REGIONAL GEOLOGICAL
CONTEXT AT PROSPECT AND BLOCK SCALES

ASSESS ANALOGOUS DEPOSITIONAL ENVIRONMENTS
AND TECTONIC REGIMES AROUND THE WORLD

IDENTIFY FUTURE AREAS OF CORPORATE INTEREST

EXTEND YOUR PLAYS BEYOND AREAS LIMITED
BY CURRENT KNOWLEDGE

PLACE DEPOSITIONAL SYSTEMS INTO A
PALAEOENVIRONMENTAL CONTEXT



GETECH

overview

This programme is one of GETECH's **Global Thematic Programmes**, and comprises:

1 Atlases of Global Palaeogeography

Principal tectonic elements from GETECH's Global Tectonics Programme
Multiple stage level reconstructions within each Volume
Presented in ArcGIS, hardcopy and Google Earth formats
6 Volumes from Neo-Proterozoic to Cenozoic
Palaeoenvironments and PalaeoDEMs
1:15million scale compilation and resolution

2 GETECH's Global Plate Model v1.0

3 Regional Palaeogeographic Maps

Focussed on local hydrocarbon prospectivity issues

4 Research and Development projects

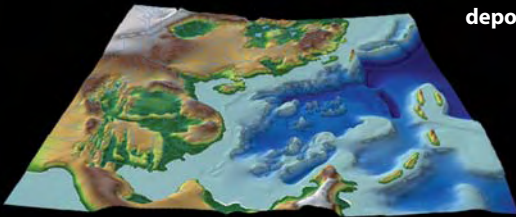
5 Training, Workshops and sponsor meetings

The three year programme, 2010 - 2012, provides a unique resource to help reduce exploration risk through an enhanced understanding of the regional geological context, thereby potentially saving millions of dollars in unnecessary seismic and drilling costs.

Tectonic and palaeoenvironment maps are used by hydrocarbon explorationists to examine the juxtaposition of different play elements (source, reservoir and seal), and their relationship to tectonic regimes. GETECH's new and unique series of maps will help predict the extensions of hydrocarbon plays and test the consequences of the spatial and temporal evolution of sediment source-to-sink relationships: For example by examining:

the palaeogeology and lithology of hinterlands
changing transport distances
denudation rates
deposition of clastics

The palaeogeographic reconstructions are based on GETECH's Global Plate Model v1.0 which was developed as part of our **Global Tectonics Programme**, and form the boundary conditions for a new, unique series of Earth Systems modelling experiments contained within our **Global Earth Systems Modelling Programme**.



1 atlases of global palaeogeography

The Atlases are presented as **six Volumes** covering different time epochs:



Each Volume comprises:

ArcGIS 9.x product

Suitable for viewing at up to 1:15 million scale.
The layers include:

- Gross depositional environments
- Tectonophysiographic terrains
- Principal tectonic elements
- PalaeoDEMs
- Palaeodrainage

Hardcopy A3 Atlas

Global overview maps for each timeslice of:

- Principal tectonic elements, lithologies, depositional environments and tectonophysiographic terrains
- Palaeotopography, palaeobathymetry and palaeorivers

Wallmaps

Montage of the global overview maps.

Report

- Executive Summary
- Methodologies
- GIS Legend
- Bibliography

2 GETECH's global plate model v1.0

This new and unique Global Plate Model underpins all our plate reconstructions, and is an integral part of our **Global Tectonics Programme**.

3 regional palaeogeographic maps

GETECH has generated a series of 1:5 million scale palaeogeography maps covering selected key exploration areas around the world as part of our **Geodynamics and Petroleum Geology studies**. Sponsors of the complete **Global Palaeogeographic Programme** will receive all these maps and for the duration of the programme, all future maps from our **Geodynamics and Petroleum Geology studies**.

4 research and development

Relevant Research and Development projects will be discussed and undertaken in collaboration with Sponsors to enhance the value of the ongoing Programme's products.

5 training, workshops and sponsor meetings

Training courses and Technical Workshops, in Houston and Leeds UK, will be held for our **Global Palaeogeographic Programme** sponsors. These will provide a forum for discussion of methodologies, results and future work priorities.



PROGRAMMES

GETECH has commenced several **Global Thematic Programmes** which will: assist oil companies to reduce exploration risk; rank new and frontier areas for potential oil and gas exploration; and enhance the value of your global portfolios.

GLOBAL GRAVITY AND MAGNETIC DATA

GLOBAL TECTONICS PROGRAMME

GLOBAL PALAEOGEOGRAPHY PROGRAMME

GLOBAL EARTH SYSTEMS MODELLING PROGRAMME

GLOBAL LANDSCAPE ANALYSIS PROGRAMME

GEODYNAMICS & PETROLEUM
GEOLOGY STUDIES

SERVICES

For further details please contact GETECH:

UK Office	US Office	Email	Web
+44 113 322 2200	+1 713 979 9900	info@getech.com	www.getech.com



GETECH

